

SID (PILOT NAV)

## MILL BAY FOUR DEP (MB4.MB)

VICTORIA INTL  
VICTORIA BRITISH COLUMBIA

VOT 115.7

● ATIS 118.8

● CLNC DEL 126.4

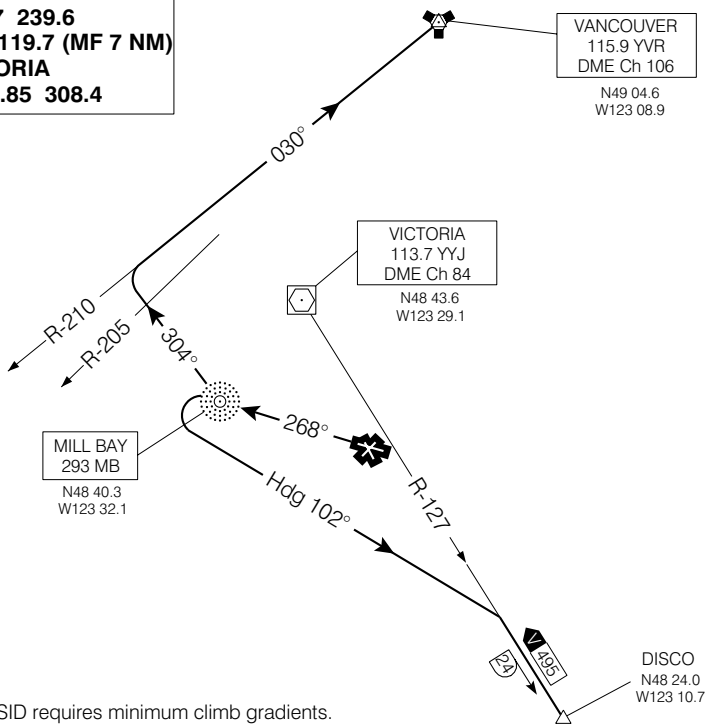
● GND 121.9 361.4

● TWR 119.7 239.6

O/T TFC 119.7 (MF 7 NM)

DEP VICTORIA

TML 133.85 308.4



NOTE: This SID requires minimum climb gradients.  
Refer to route description.

Chart not to scale

## DEPARTURE ROUTE DESCRIPTION

**Runway 27: DISCO TRANSITION** - Requires minimum climb gradient of 330 ft/NM to 3500. Climb direct "MB" NDB. Turn left to heading 102° to intercept and proceed via "YYJ" R-127 to DISCO. Contact Victoria Terminal **after passing 1000** unless instructed otherwise by ATC. Maintain 4000 or as assigned.

**VANCOUVER TRANSITION** - Requires minimum climb gradient of 220 ft/NM to 3500. Climb direct "MB" NDB. Turn right to track 304°, cross "YVR" R-205, turn right to intercept "YVR" R-210 and proceed to "YVR" VORTAC. Contact Victoria Terminal **after passing 1000** unless instructed otherwise by ATC. Maintain 4000 or as assigned.

All aircraft expect clearance to flight planned altitude/flight level 10 minutes after departure.

NOTE: Refer to Noise Abatement Procedures for additional requirements.

## MILL BAY FOUR DEP (MB4.MB)

EFF 19 FEB 04 CHANGE: DISCO coordinates, 2003 Mag var

VICTORIA BRITISH COLUMBIA  
VICTORIA INTL

NAD83