



Geomatics Canada

VICTORIA INTL
VICTORIA BRITISH COLUMBIA

ILS RWY 09

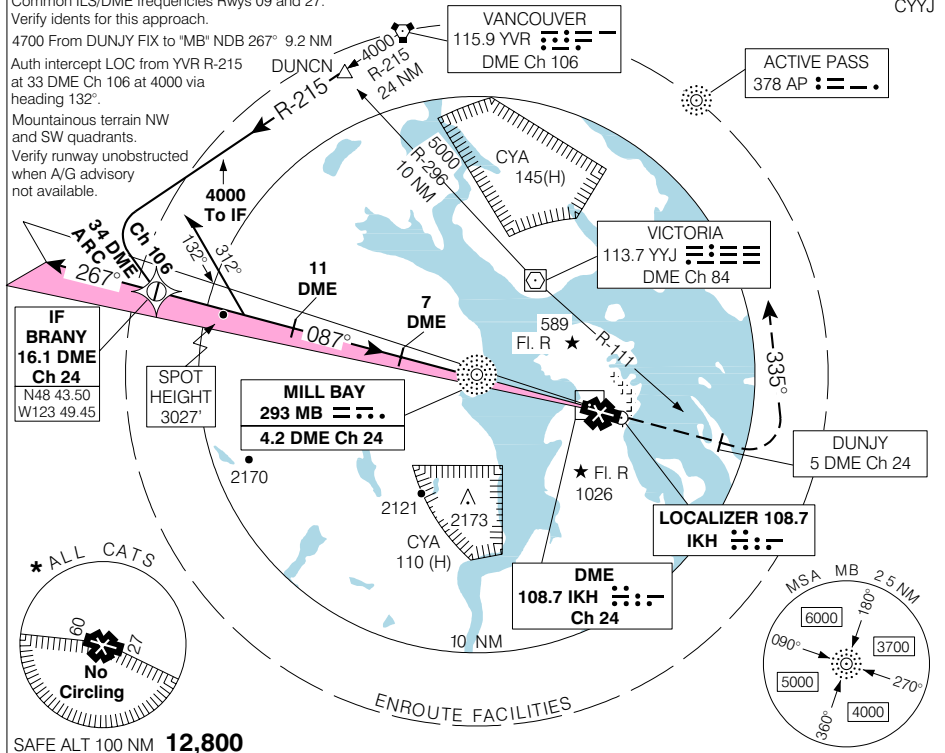
ATIS 118.8	ARR/DEP VICTORIA TERMINAL 133.85 308.4	TWR 119.7 239.6 O/T TFC 119.7 (MF 7 NM)	GND 121.9 361.4	ELEV 63
				TDZE 09 55

Common ILS/DME frequencies Rwy's 09 and 27.
Verify ident's for this approach.

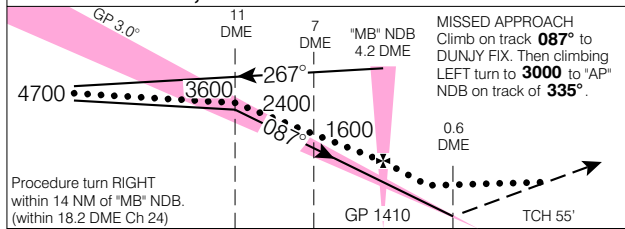
4700 From DUNJY FIX to "MB" NDB 267° 9.2 NM

Auth intercept LOC from YVR R-215 DUNCN
at 33 DME Ch 106 at 4000 via heading 132°.

Mountainous terrain NW and SW quadrants.
Verify runway unobstructed when A/G advisory not available.



SAFE ALT 100 NM **12,800**

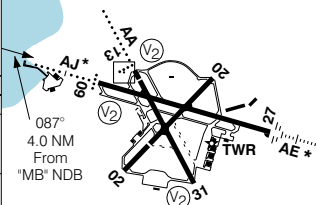


Procedure turn RIGHT within 14 NM of 'MB' NDB. (within 18.2 DME Ch 24)

Right hand circuits Rwy's 09, 20 & 31.

ARCAL 119.7 (K) (see CFS)

Rwy 09-27 7000
Rwy 02-20 5026
Rwy 13-31 5003



CATEGORY	A	B	C	D
ILS ILS/DME	255	(200)	3/4 RVR 40	
LOC/DME	380	(325)	1 RVR 50	
* CIRCLING	580 (517) 1 1/2	600 (537) 1 3/4	640 (577) 2	920 (857) 2 1/2

*MB' NDB to MAP 4.0 NM					
Knots	70	90	110	130	150
Min:Sec	3:26	2:40	2:11	1:51	1:36

ILS RWY 09

EFF 19 FEB 04 CHANGE: 2003 Mag Var

N48 38 49 W123 25 33 VAR 19° E

VICTORIA BRITISH COLUMBIA
VICTORIA INTL

NAD83