



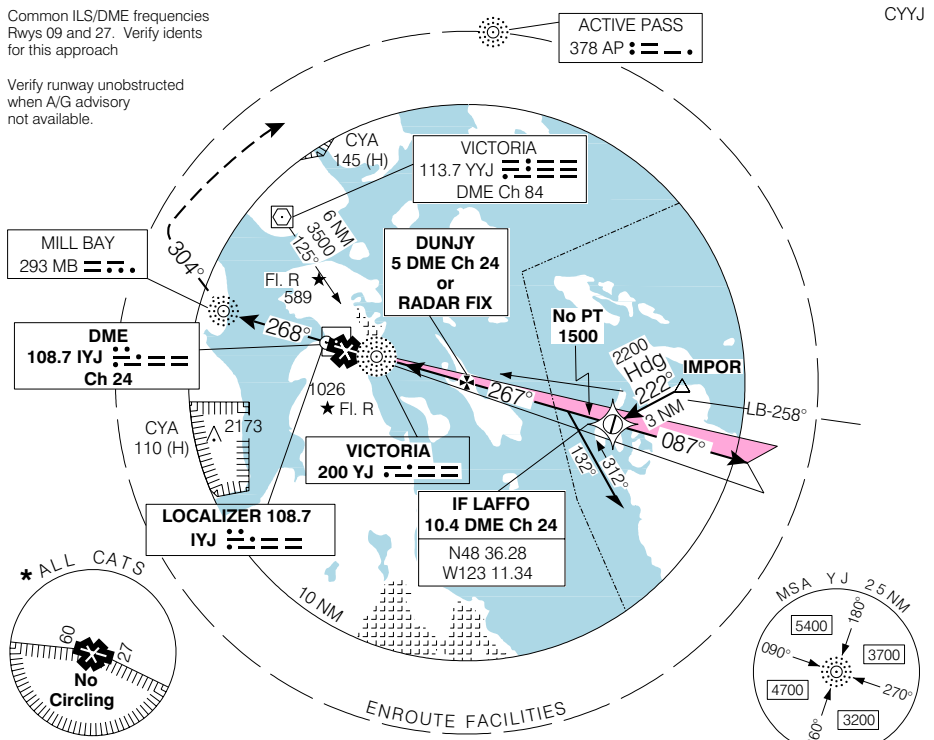
VICTORIA INTL
VICTORIA BRITISH COLUMBIA

ILS/DME or ILS/RADAR RWY 27

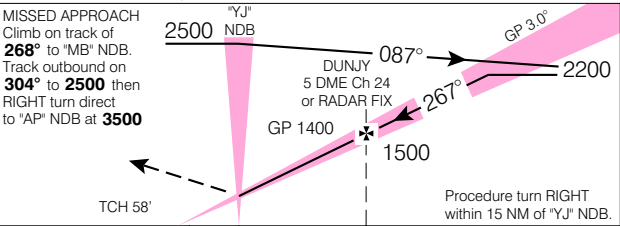
<p>● ATIS 118.8</p>	<p>ARR/DEP VICTORIA TERMINAL 133.85 308.4</p>	<p>● TWR 119.7 239.6 O/T FFC 119.7 (MF 7 NM)</p>	<p>● GND 121.9 361.4</p>	<p>ELEV 63 TDZE 27 57</p>
--------------------------------	---	---	---	---

Common ILS/DME frequencies
Rwys 09 and 27. Verify idents
for this approach

Verify runway unobstructed
when A/G advisory
not available.



SAFE ALT 100 NM **12,800**



Right hand circuits Rwys 09, 20 & 31.

ARCAL 119.7 (K) (see CFS)

Rwy 09-27 7000
Rwy 02-20 5026
Rwy 13-31 5003

CATEGORY	A	B	C	D
ILS/DME ILS/RADAR	257		(200)	1/2 RVR 26
LOC/DME LOC/RADAR	400		(343)	1 RVR 50
* CIRCLING	580 (517)	600 1 1/2 (537)	660 1 3/4 (597)	920 2 (857) 2 1/2

FAF to "YJ" NDB 3.5 NM					
Knots	70	90	110	130	150
Min:Sec	3:00	2:20	1:54	1:37	1:24

ILS/DME or ILS/RADAR RWY 27

EFF 19 FEB 04 CHANGE: 2003 Mag Var

VAR 19° E VICTORIA BRITISH COLUMBIA
N48 38 49 W123 25 33
VICTORIA INTL
NAD83