

SID (PILOT NAV)

CLOAKE THREE DEP (CLOAKE 3. YVR)VICTORIA INTL
VICTORIA BRITISH COLUMBIA

VOT 115.7

● ATIS 118.8

● CLNC DEL 126.4

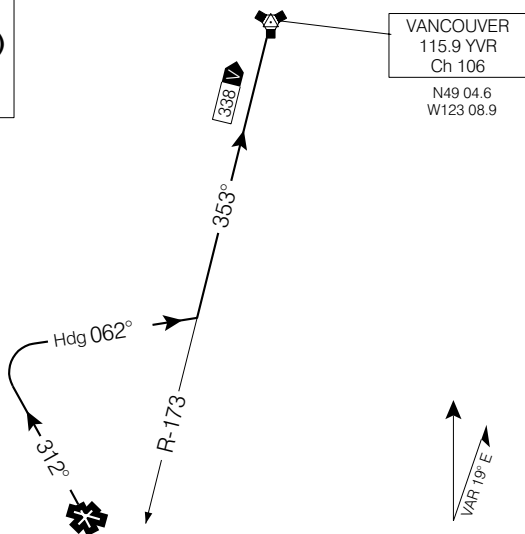
● GND 121.9 361.4

● TWR 119.7 239.6

O/T TFC 119.7 (MF 7 NM)

DEP VICTORIA

TML 133.85 308.4



NOTE: This SID requires a minimum climb gradient and a visual climb to 700.

Chart not to scale

DEPARTURE ROUTE DESCRIPTION

CAT A & B: Runway 31 - Requires minimum climb gradient of 300 ft/NM to 700. Climb visual on runway heading to 700. Turn RIGHT to heading 062° to intercept and proceed via V338 to YVR. Contact Victoria Terminal **after passing 1000** unless instructed otherwise by ATC. Maintain 3000 or as assigned. Expect clearance to flight planned altitude/flight level 10 minutes after departure.

CAT C & D: NOT AUTHORIZED

Note: Refer to Noise Abatement Procedures for additional requirements.

CLOAKE THREE DEP (CLOAKE 3. YVR)

EFF 19 FEB 04

CHANGE: 2003 Mag Var

VICTORIA BRITISH COLUMBIA
VICTORIA INTL

NAD83