

- ATIS 118.8
- ARR 133.85 308.4
- TWR 119.7 239.6
- O/T TFC 119.7 (MF 7 NM)
- GND 121.9 361.4

ALL ALTITUDES WILL BE ISSUED BY ATC

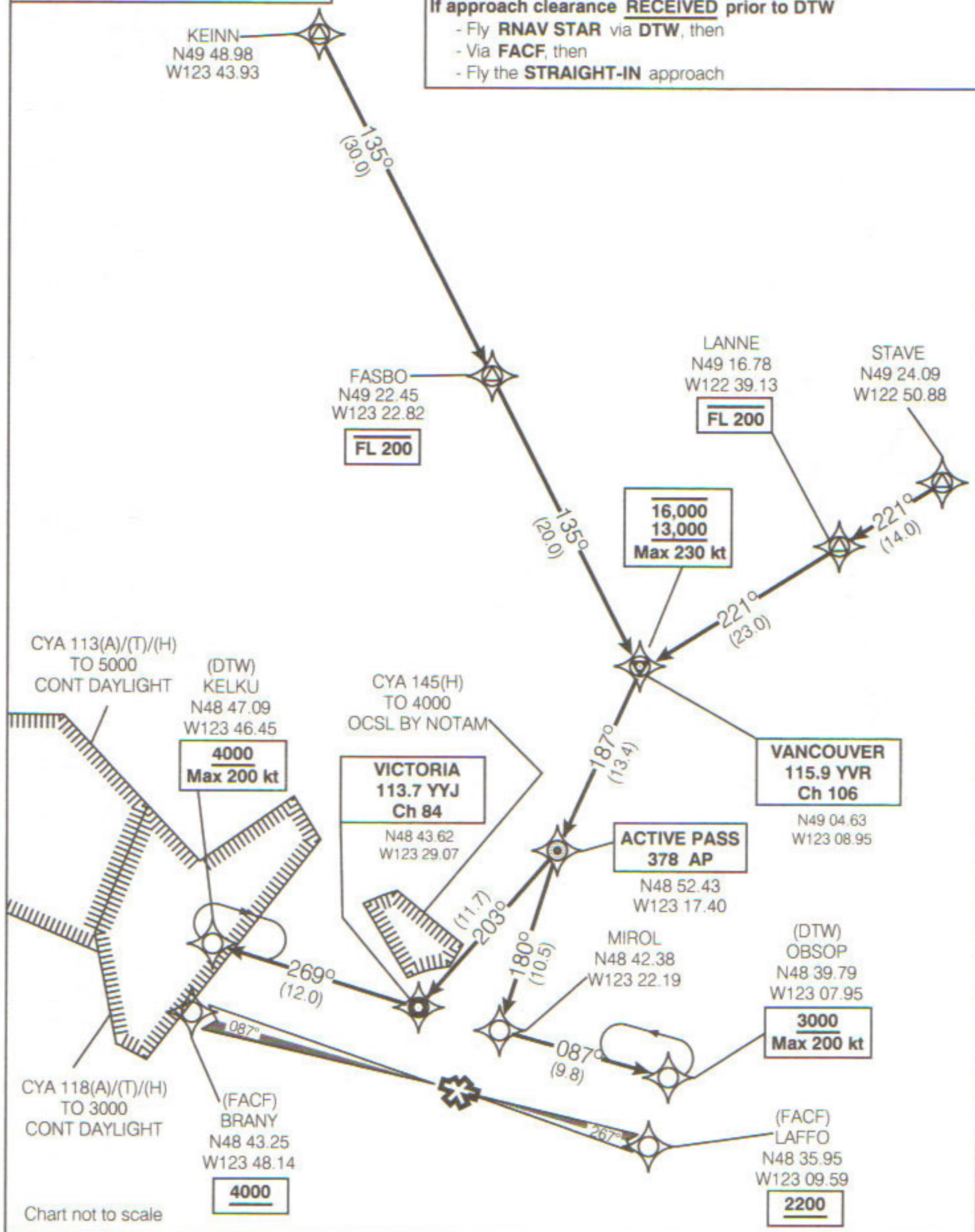
If RNAV STAR includes a DTW, the following procedures apply.

If approach clearance is **NOT** RECEIVED prior to DTW

- Enter published hold as depicted
- Expect radar vectors to final

If approach clearance **RECEIVED** prior to DTW

- Fly **RNAV STAR** via **DTW**, then
- Via **FACF**, then
- Fly the **STRAIGHT-IN** approach



Source of Canadian Civil Aeronautical Data : © 2007 NAV CANADA All rights reserved