

STAR (RNAV) RWYS 08L & 08R
WHISTLER ONE ARR (MENPU.WHSLR 1)

VANCOUVER INTL
 VANCOUVER BC

ATIS 124.6
 ARR 128.17(Outer) 133.1(Inner) 352.7
 TWR 119.55(N) 118.7(S) 226.5

ALL ALTITUDES WILL BE ISSUED BY ATC

If RNAV STAR includes a DTW, the following procedures apply.

If approach clearance is **NOT RECEIVED** prior to DTW

- Fly depicted heading $\bullet\bullet\bullet\rightarrow$
- Expect radar vectors to final

If approach clearance **RECEIVED** prior to DTW

- Fly RNAV STAR via DTW, then
- Via FACF, then
- Fly the STRAIGHT-IN approach

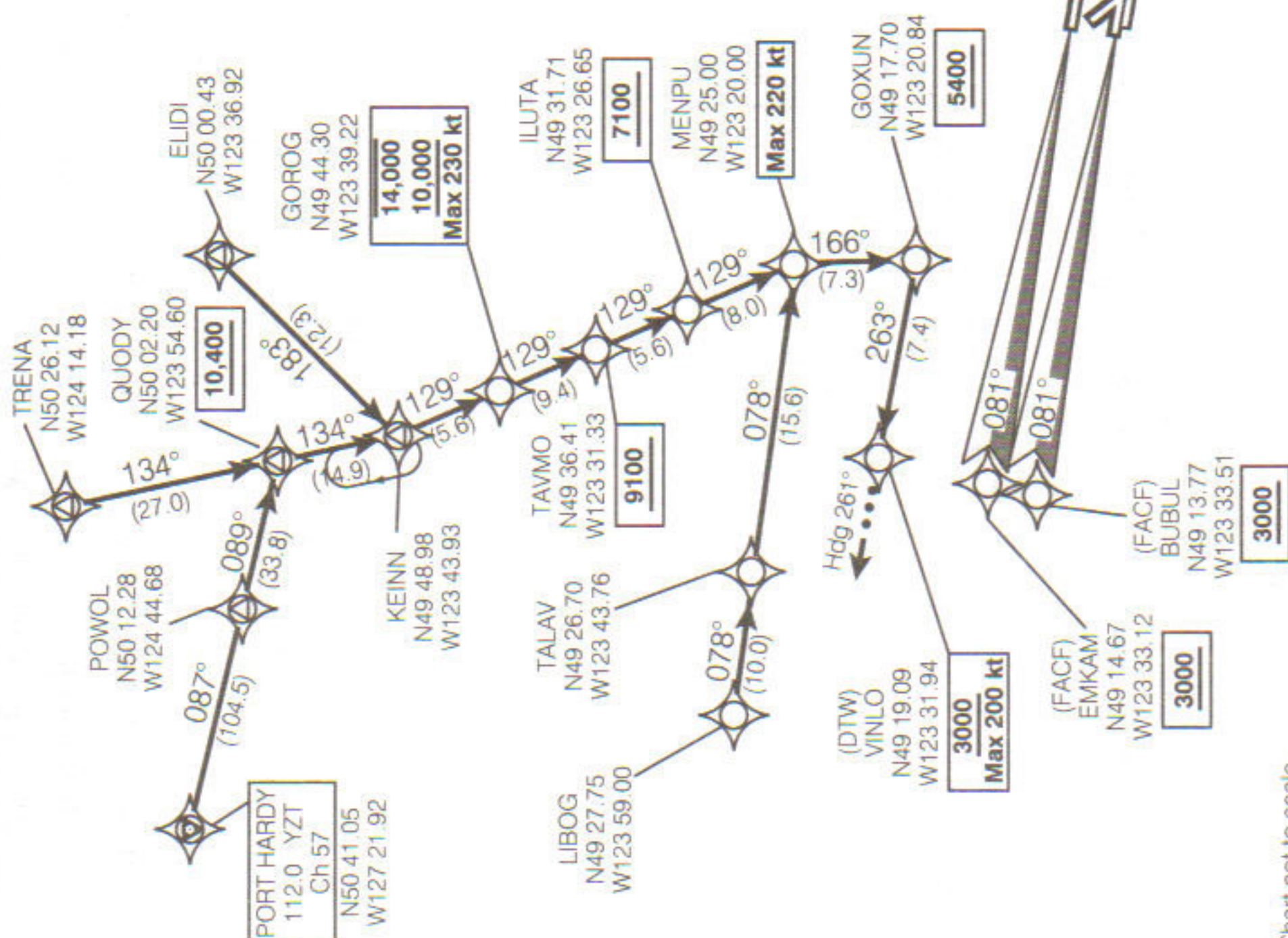


Chart not to scale

Source of Canadian Civil Aeronautical Data : © 2007 NAV CANADA All rights reserved

WHISTLER ONE ARR (MENPU.WHSLR 1)

VAR 18° E (2006)

VANCOUVER BC
 VANCOUVER INTL