

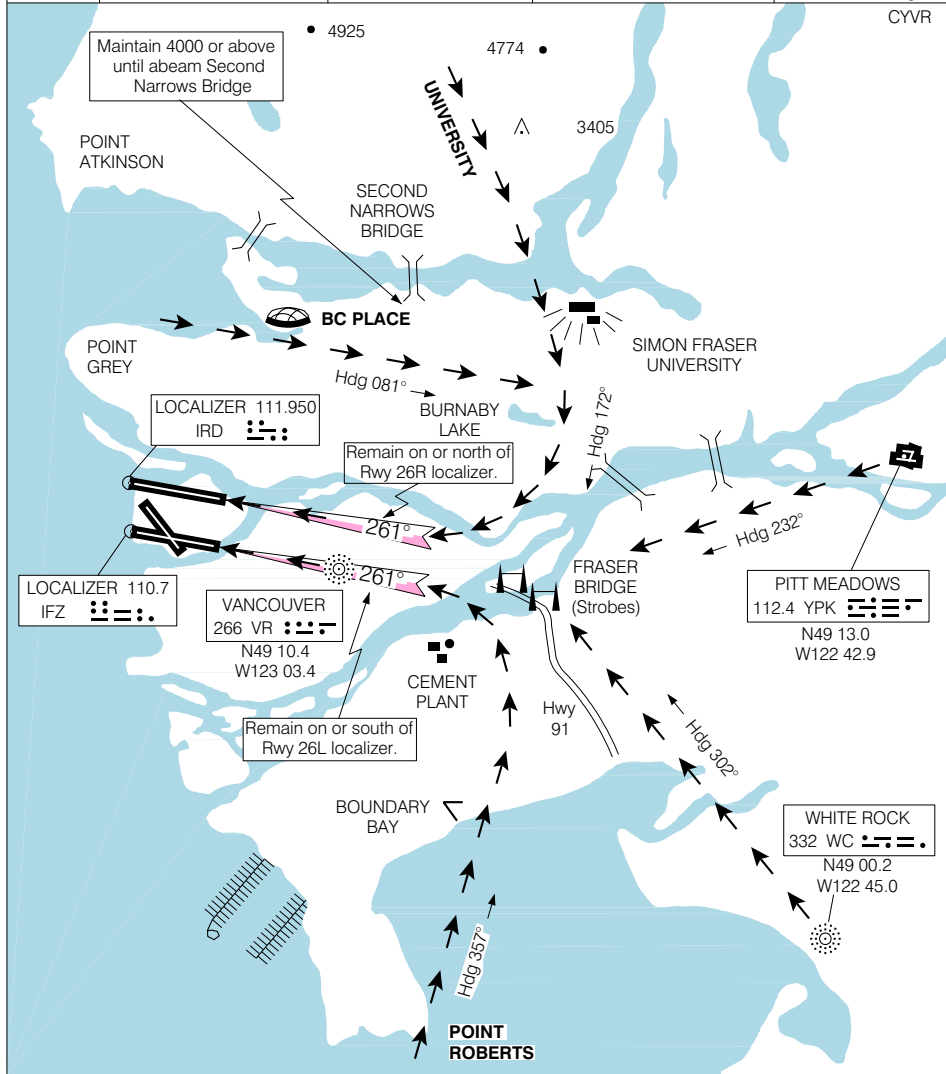


**VISUAL APPROACHES RWYS 26L & 26R**

Geomatics Canada

**VANCOUVER INTL**  
VANCOUVER BRITISH COLUMBIA

<b>ATIS</b> 124.6	<b>ARR</b> 128.6(Outer) 133.1(Inner) 352.7		<b>TWR</b> 124.0 119.55(N) 118.7(S) 226.5		<b>GND</b> 127.15(N) 121.7(S)		<b>ELEV 14</b>		
							<b>TDZE 26L</b>	<b>7</b>	
								<b>TDZE 26R</b>	<b>9</b>



**BC PLACE VISUAL RWYS 26L, 26R**  
**UNIVERSITY VISUAL RWYS 26L, 26R**  
**PITT MEADOWS VISUAL RWYS 26L, 26R**  
**WHITE ROCK VISUAL RWYS 26L, 26R**  
**POINT ROBERTS VISUAL RWYS 26L, 26R**

**Intercept rwy centerline at or above 3000.**

**GO AROUND PROCEDURE: Climb on hdg 261° to 2000 or as directed by ATC.**

MINIMUM WEATHER : 2000-3

**VISUAL APPROACHES RWYS 26L & 26R**      N49 11.42 W123 10.55      **VANCOUVER BRITISH COLUMBIA**  
 EFF 10 JUN 04      CHANGE: Note deleted      VAR 19° E      **VANCOUVER INTL**

© 2004 Her Majesty The Queen in Right of Canada, Department of Natural Resources

Source of Canadian Civil Aeronautical Data © 2004 NAV CANADA