

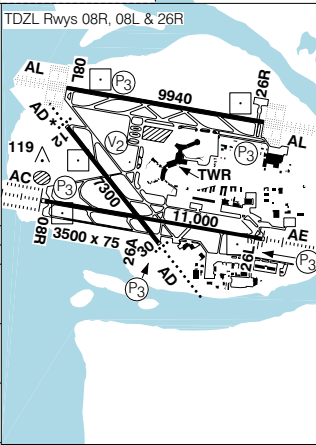
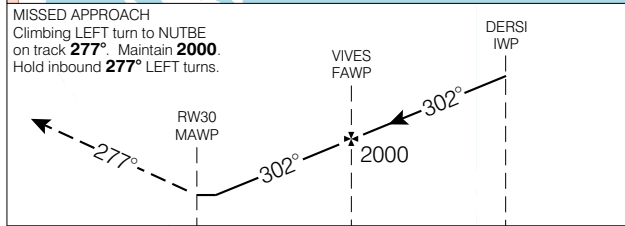
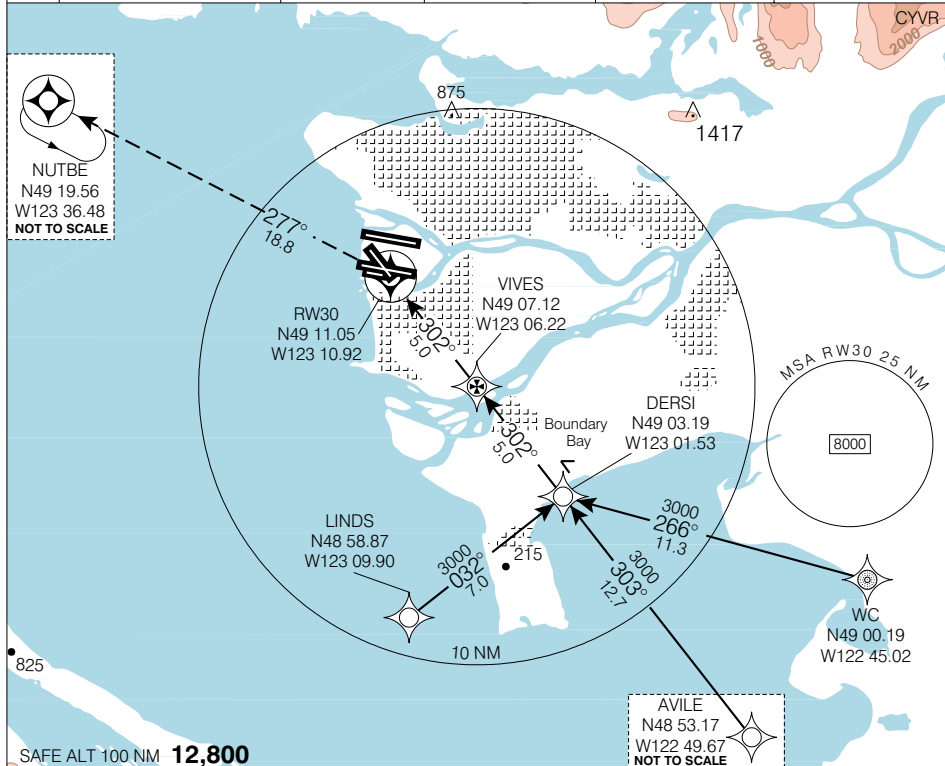


RNAV(GPS) RWY 30

Geomatics Canada

VANCOUVER INTL
VANCOUVER BRITISH COLUMBIA

ATIS 124.6	ARR	TWR	GND	DEP	ELEV
	128.6(Outer) 133.1(Inner) 352.7	124.0 118.7(S) 119.55(N) 226.5	121.7(S) 127.15(N) 275.8	126.125(N) 132.3(S) 363.8	14
					TDZE 30 8



CATEGORY	A		B		C		D	
LNAV / VNAV	NOT AUTHORIZED							
LNAV	520		(512)		1 1/2			
CIRCLING	640		660		680		780	
	(626)	2	(646)	2	(666)	2	(766)	2 1/4

Knots	70	90	110	130	150
Min:Sec					

RNAV(GPS) RWY 30

EFF 10 JUN 04 CHANGE: Landing chart

N49 11 42 W123 10 55 VAR 20°E (1999)

VANCOUVER BRITISH COLUMBIA
VANCOUVER INTL
NAD83