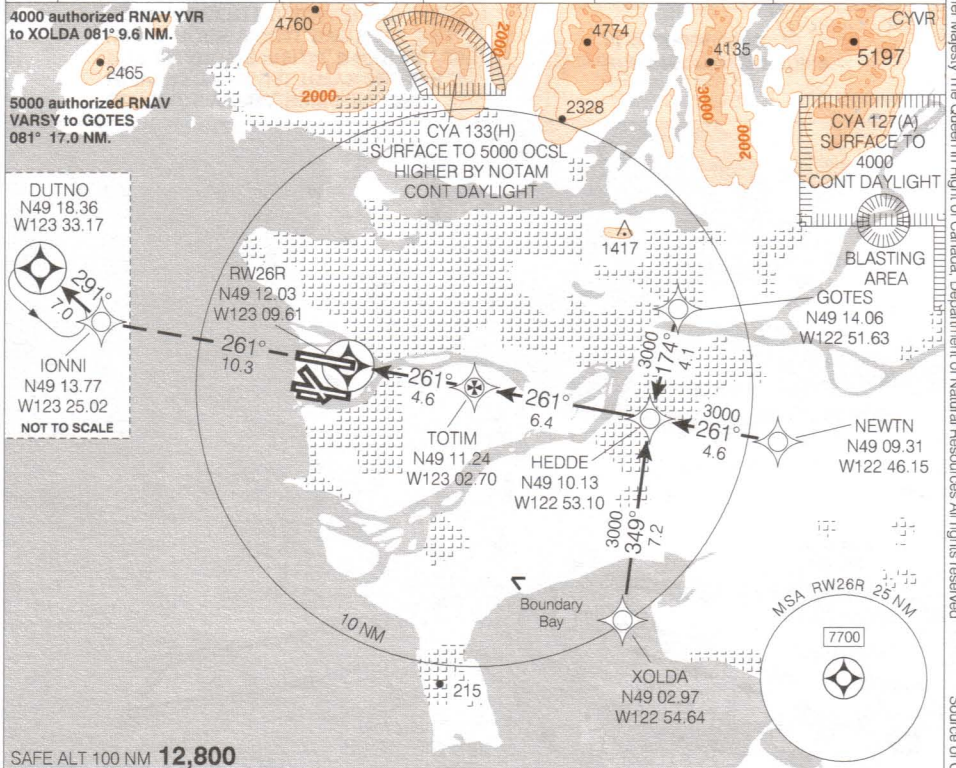


# RNAV(GNSS) RWY 26R

**NOT FOR NAVIGATION**

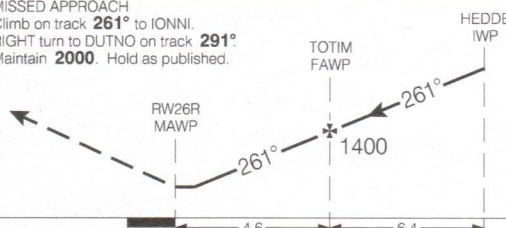
VANCOUVER INTL  
VANCOUVER BC

ATIS 124.6	ARR 128.6(Outer) 133.1(Inner) 352.7	TWR 119.55(N) 226.5	GND 127.15(N) 275.8	DEP 126.125(N) 132.3(S) 363.8	ELEV <b>14</b>
					TDZE <b>26R 9</b>

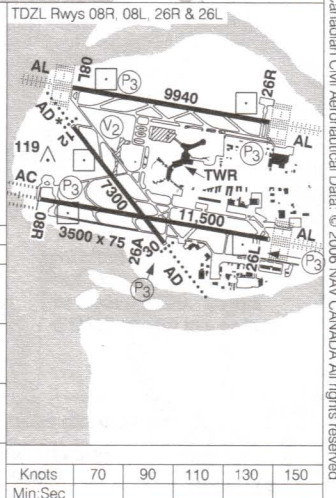


SAFE ALT 100 NM **12,800**

MISSED APPROACH  
Climb on track **261°** to IONNI.  
RIGHT turn to DUTNO on track **291°**  
Maintain **2000**. Hold as published.



CATEGORY	A	B	C	D
LNAV / VNAV		NOT AUTHORIZED		
LNAV	<b>520</b>	(511)	1	
CIRCLING		NOT AUTHORIZED		



# RNAV(GNSS) RWY 26R

N49 11 38 W123 11 04 VAR 19°E (2002)

VANCOUVER BC  
VANCOUVER INTL  
NAD83

EFF 8 JUN 06 CHANGE Comm boxes

© 2006 Her Majesty The Queen in Right of Canada. Department of Natural Resources. All rights reserved. Source of Canadian Civil Aeronautical Data: © 2006 NAV CANADA. All rights reserved.