

SID (VECTOR) non-JET-AIRCRAFT



VANCOUVER INTL
VANCOUVER BRITISH COLUMBIA

RICHMOND NINE DEP (RICHMOND 9.)

VOT 114.8
ATIS 124.6
CLNC DEL 121.4
GND 121.7(S) 127.15(N)
275.8
TWR 118.7(S) 119.55(N)
226.5
DEP 132.3(S) 363.8

1. THIS PROCEDURE IS FOR PROPELLER DRIVEN AIRCRAFT ONLY.
2. DO NOT EXCEED 165 KTS IN CLIMB UNTIL IN CONTACT WITH DEP CONTROL AND PASSING 4000' ASL.
3. NO TURNS BELOW 500' ASL.



© 2004 Her Majesty The Queen in Right of Canada, Department of Natural Resources

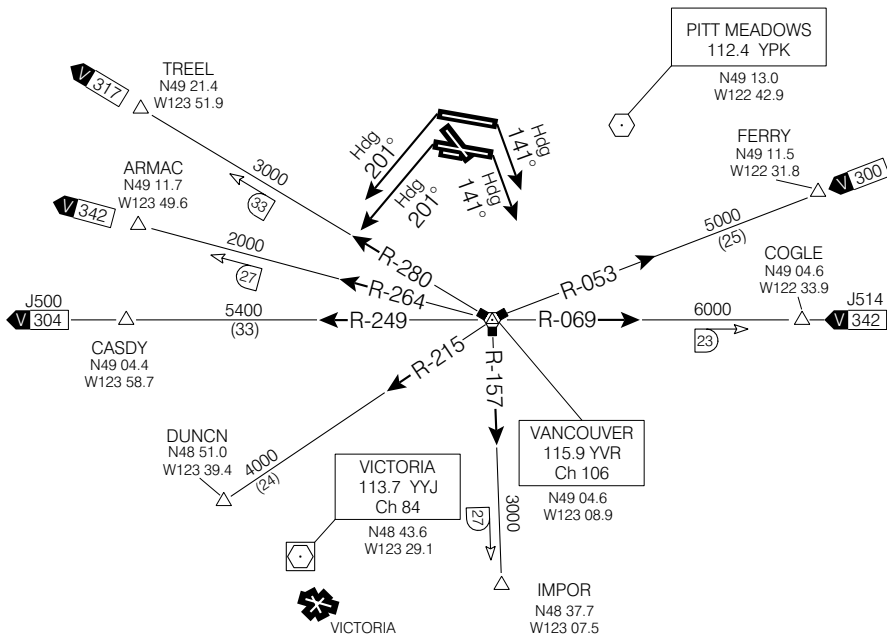


Chart not to scale

DEPARTURE ROUTE DESCRIPTION (NON-JET-AIRCRAFT ONLY)

- Runway 08L & 08R:** At 500' ASL turn RIGHT to climb on heading 141° or as assigned by ATC. Contact Departure Control after passing 1000' ASL unless instructed otherwise by ATC. Maintain 2000' ASL or as assigned. Expect radar vectors to filed/assigned route or depicted FIX, and clearance to flight planned altitude/flight level 10 minutes after departure.
- Runway 26L & 26R:** At 500' ASL turn LEFT to climb on heading 201° or as assigned by ATC. Contact Departure Control after passing 1000' ASL unless instructed otherwise by ATC. Maintain 2000' ASL or as assigned. Expect radar vectors to filed/assigned route or depicted FIX and clearance to flight planned altitude/flight level 10 minutes after departure.
- Lost Communications:** If no radio contact with Departure Control by published/assigned altitude maintain assigned altitude until 5 minutes after departure; then, proceed on course and climb to flight planned altitude.

NOTE: Refer to Noise Abatement Procedures for additional requirements.

RICHMOND NINE DEP (RICHMOND 9.)

VANCOUVER BRITISH COLUMBIA
VANCOUVER INTL

EFF 10 JUN 04 CHANGE: Revised

NAD83

Source of Canadian Civil Aeronautical Data © 2004 NAV CANADA