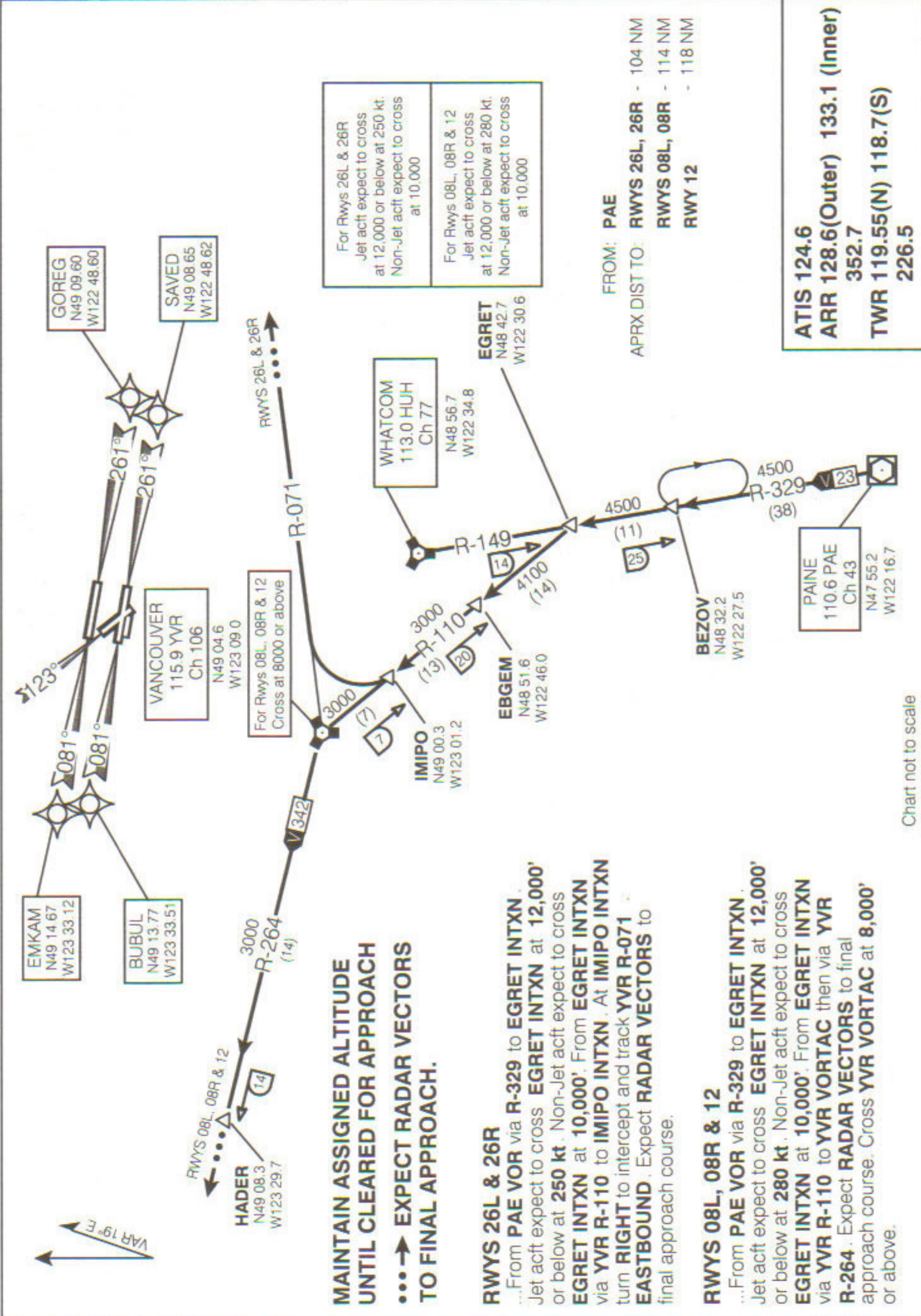


STAR PAINE ONE ARR (PAI.PAINE 1)



MAINTAIN ASSIGNED ALTITUDE UNTIL CLEARED FOR APPROACH TO FINAL APPROACH.

•••→ EXPECT RADAR VECTORS TO FINAL APPROACH.

RWYS 26L & 26R
 ...From PAE VOR via R-329 to EGRET INTXN. Jet acft expect to cross EGRET INTXN at 12,000' or below at 250 kt. Non-Jet acft expect to cross EGRET INTXN at 10,000'. From EGRET INTXN via YVR R-110 to IMIPO INTXN. At IMIPO INTXN turn RIGHT to intercept and track YVR R-071 EASTBOUND. Expect RADAR VECTORS to final approach course.

RWYS 08L, 08R & 12
 ...From PAE VOR via R-329 to EGRET INTXN. Jet acft expect to cross EGRET INTXN at 12,000' or below at 280 kt. Non-Jet acft expect to cross EGRET INTXN at 10,000'. From EGRET INTXN via YVR R-110 to YVR VORTAC then via YVR R-264. Expect RADAR VECTORS to final approach course. Cross YVR VORTAC at 8,000' or above.

Chart not to scale

Source of Canadian Civil Aeronautical Data : © 2007 NAV CANADA All rights reserved

PAINE ONE ARR (PAI.PAINE 1)