

**NOT FOR NAVIGATION**

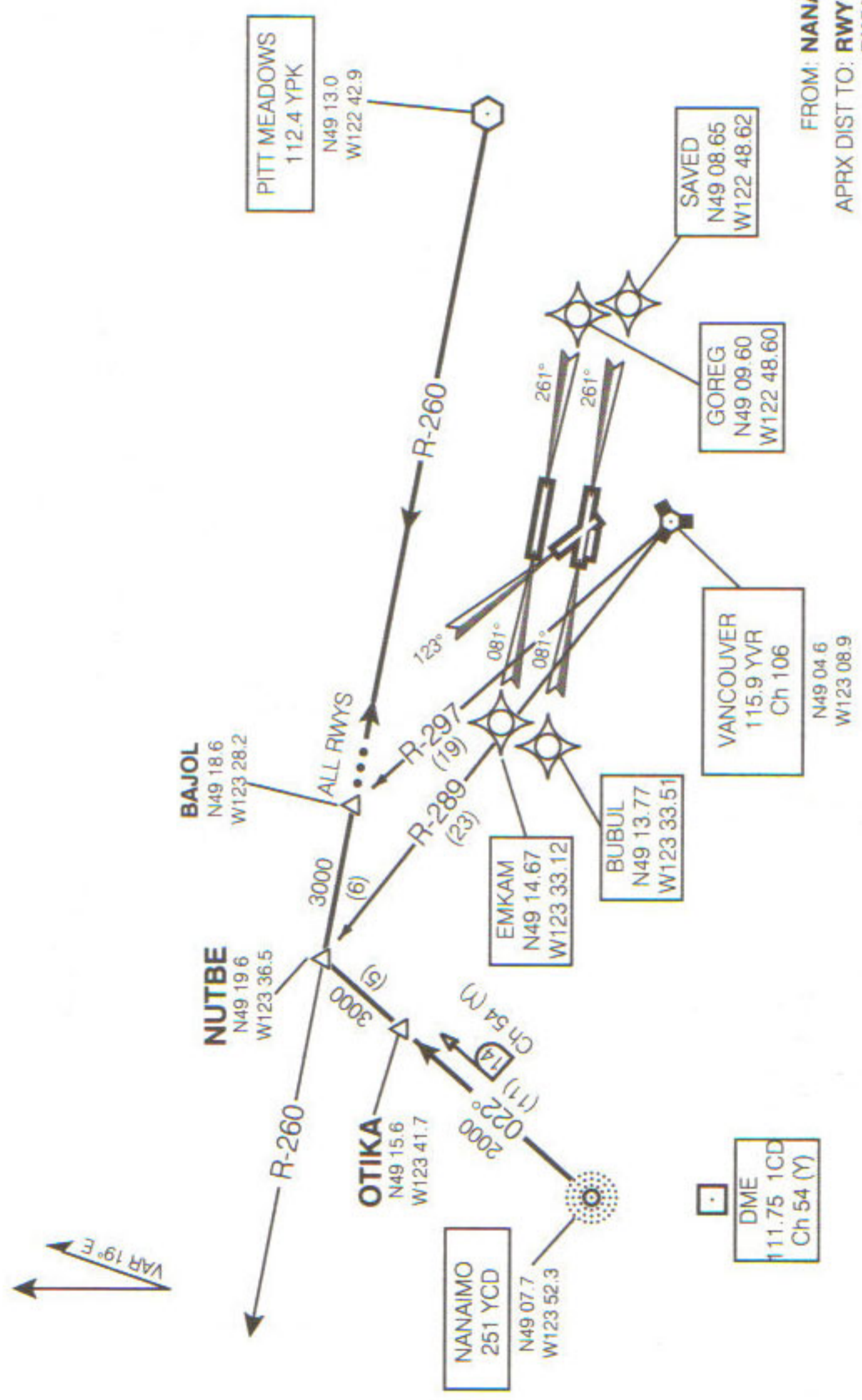
**ALL RWYS**

...From NANAIMO NDB via TRACK 022° to NUTBE INTXN then PROCEED EASTBOUND via YPK R-260 to BAJOL INTXN. Expect RADAR VECTORS to final approach course.

MAINTAIN ASSIGNED ALTITUDE UNTIL CLEARED FOR APPROACH

→ MAINTAIN PRESENT HEADING FOR VECTORS TO FINAL APPROACH.

ATIS 124.6  
 ARR 128.6(Outer) 133.1 (Inner)  
 352.7  
 TWR 119.55(N) 118.7(S)  
 226.5



FROM: NANAIMO NDB

APRX DIST TO: **RWY 12** 33 NM  
**RWYS 08L, 08R** 40 NM  
**RWYS 26L, 26R** 57 NM

Chart not to scale