

# NDB RWY 26L (GNSS)

**NOT FOR NAVIGATION**

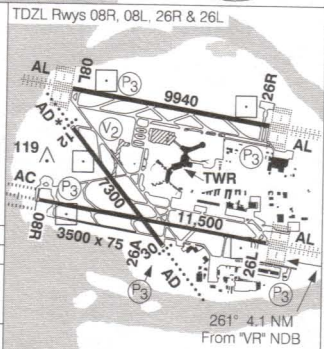
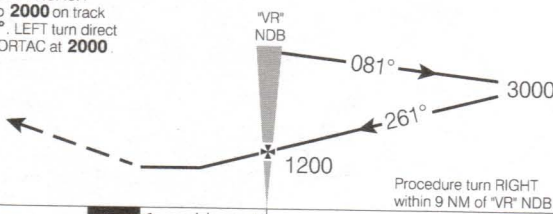
VANCOUVER INTL  
VANCOUVER BC

<b>ATIS</b> 124.6	<b>ARR</b> 128.6(Outer) 133.1(Inner) 352.7	<b>TWR</b> 118.7(S) 226.5	<b>GND</b> 121.7(S) 275.8	<b>DEP</b> 126.125(N) 132.3(S) 363.8	<b>ELEV</b> 14 <b>TDZE</b> 26L 7
----------------------	--	---------------------------------	---------------------------------	--	-------------------------------------



SAFE ALT 100 NM **12,800**

**MISSED APPROACH**  
Climb to **2000** on track of **261°**. LEFT turn direct "YVR" VORTAC at **2000**



CATEGORY	A	B	C	D
NDB	<b>580</b>		(573)	1 ¼
CIRCLING	<b>640</b> (626)	<b>660</b> (646)	<b>680</b> (666)	<b>780</b> (766)
	2	2	2	2 ¼

"VR" NDB to MAP 4.1 NM				
Knots	70	90	110	130 150
Min. Sec	<b>3:31</b>	<b>2:44</b>	<b>2:14</b>	<b>1:54 1:38</b>

# NDB RWY 26L (GNSS)

N49 11 38 W123 11 04 VAR 19° E

VANCOUVER BC  
VANCOUVER INTL  
NAD83

EFF 8 JUN 06 CHANGE: Comm boxes

© 2006 Her Majesty The Queen in Right of Canada. Department of Natural Resources All rights reserved

Source of Canadian Civil Aeronautical Data: © 2006 NAV CANADA All rights reserved