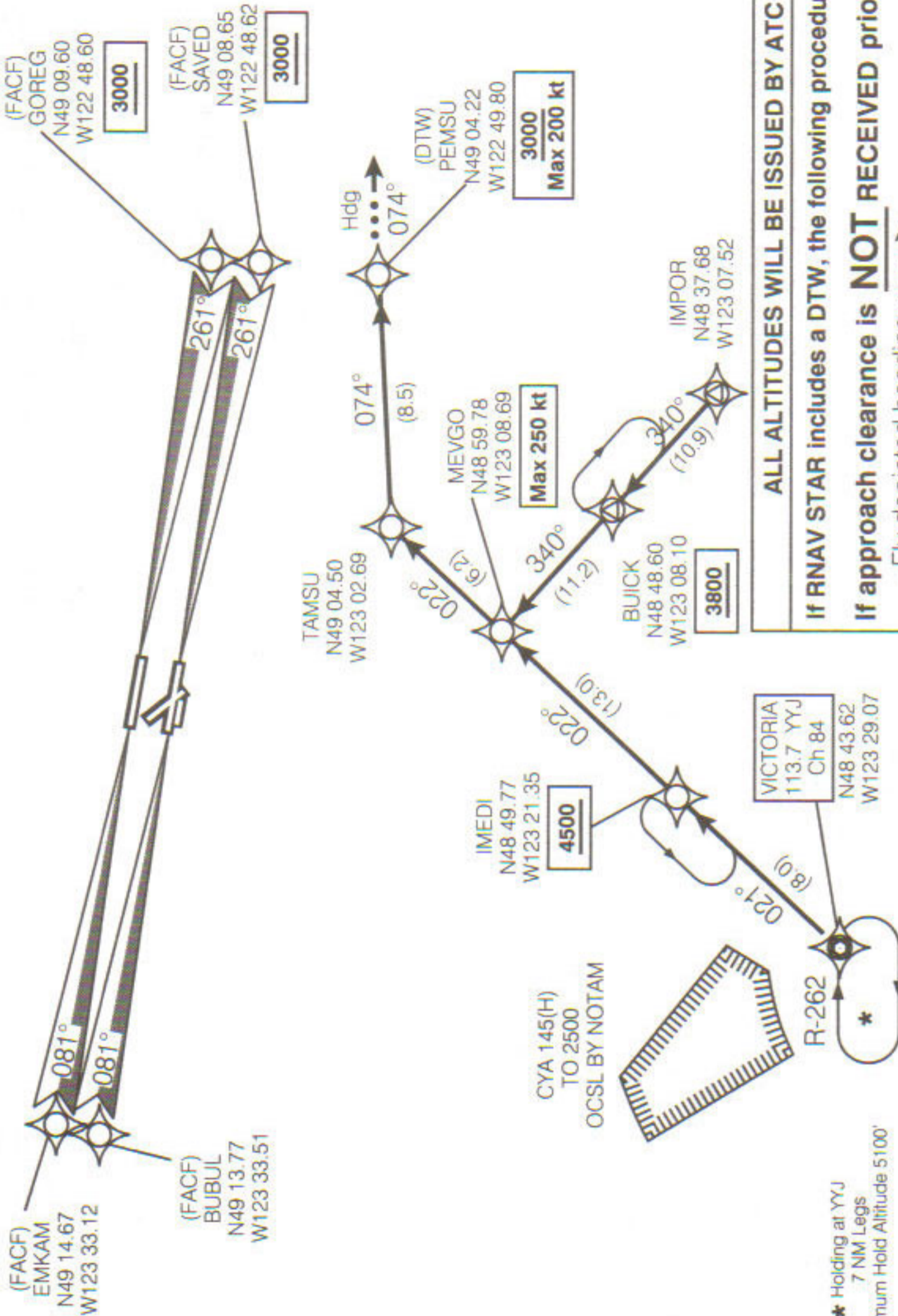


MEVGO ONE ARR (MEVGO.MEVGO 1)



ALL ALTITUDES WILL BE ISSUED BY ATC

If RNAV STAR includes a DTW, the following procedures apply.

If approach clearance is **NOT RECEIVED** prior to DTW

- Fly depicted heading  $\rightarrow$
- Expect radar vectors to final

If approach clearance **RECEIVED** prior to DTW

- Fly RNAV STAR via DTW, then
- Via FACF, then
- Fly the STRAIGHT-IN approach

ATIS 124.6  
 ARR 128.6(Outer) 133.1(Inner)  
 352.7  
 TWR 119.55(N) 118.7(S)  
 226.5

Chart not to scale

Source of Canadian Civil Aeronautical Data : © 2007 NAV CANADA All rights reserved

MEVGO ONE ARR (MEVGO.MEVGO 1)