

ATIS 124.6
ARR 128.17(Outer) 133.1 (Inner)
 352.7
TWR 119.55(N) 118.7(S)
 226.5

ALL ALTITUDES WILL BE ISSUED BY ATC

If RNAV STAR includes a DTW, the following procedures apply.

If approach clearance is NOT RECEIVED prior to DTW

- Fly depicted heading **••••→**
- Expect radar vectors to final

If approach clearance RECEIVED prior to DTW

- Fly **RNAV STAR** via **DTW**, then
- Via **FACF**, then
- Fly the **STRAIGHT-IN** approach

NOT FOR NAVIGATION

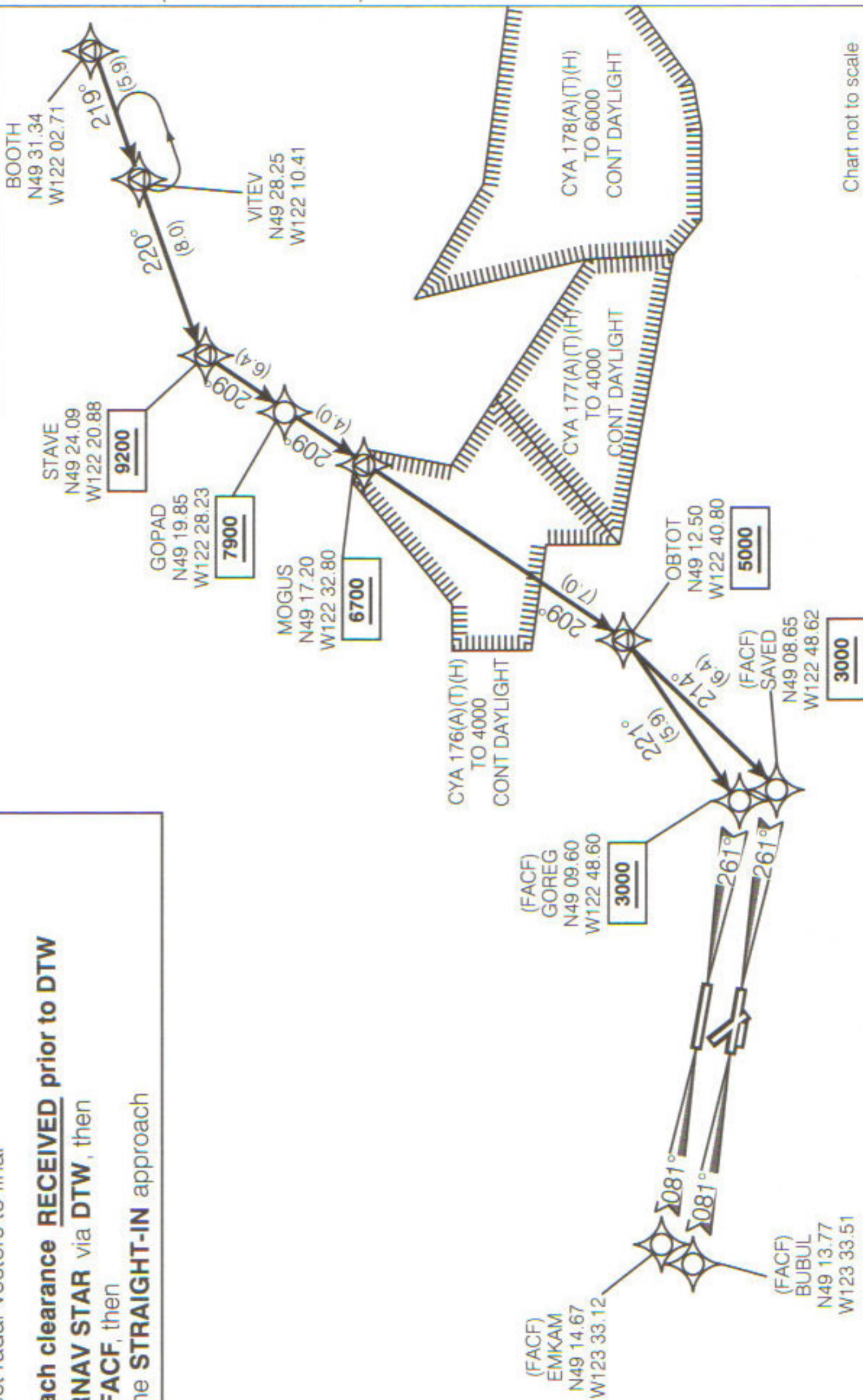


Chart not to scale

Source of Canadian Civil Aeronautical Data : © 2007 NAV CANADA All rights reserved