

STAR (RNAV) QUIET HOURS PROCEDURE RWYS 08L & 08R  
**MEADOWS ONE ARR** (BOOTH.MDOWS 1)

VANCOUVER INTL  
 VANCOUVER BC

ALL ALTITUDES WILL BE ISSUED BY ATC

If RNAV STAR includes a DTW, the following procedures apply.

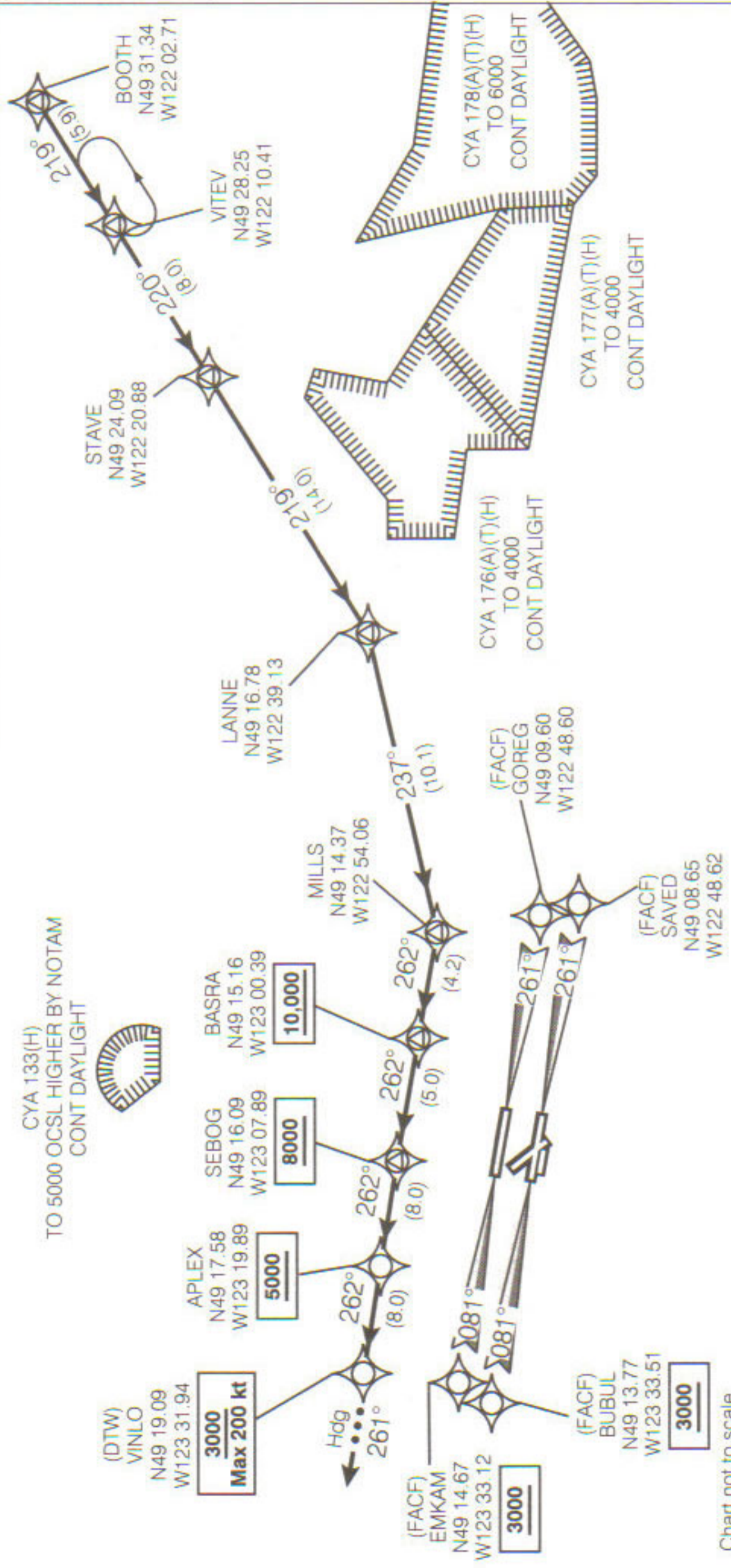
If approach clearance is **NOT RECEIVED** prior to DTW

- Fly depicted heading **.....→**
- Expect radar vectors to final

If approach clearance **RECEIVED** prior to DTW

- Fly **RNAV STAR** via **DTW**, then
- Via **FACF**, then
- Fly the **STRAIGHT-IN** approach

ATIS 124.6  
 ARR 128.17(Outer) 133.1(Inner)  
 352.7  
 TWR 119.55(N) 118.7(S)  
 226.5



**MEADOWS ONE ARR** (BOOTH.MDOWS 1)

VAR 19° E (2003)

VANCOUVER BC  
 VANCOUVER INTL