



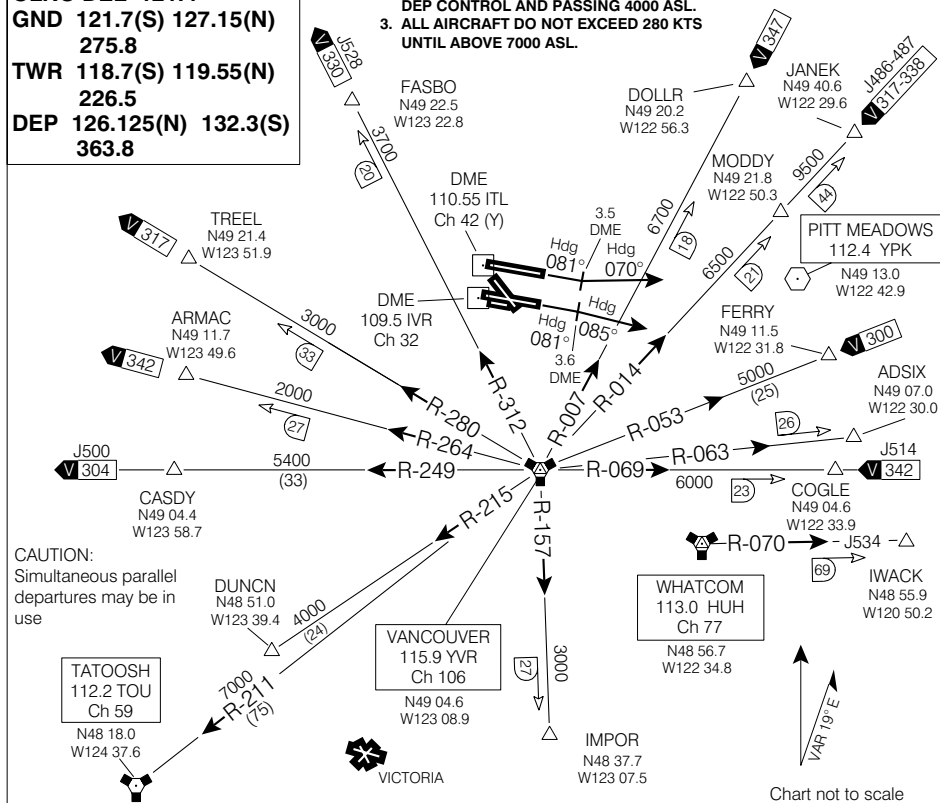
SID (VECTOR)

VANCOUVER INTL

MCKINLAY ONE DEP (KIN1.)

VOT 114.8
ATIS 124.6
CLNC DEL 121.4
GND 121.7(S) 127.15(N)
275.8
TWR 118.7(S) 119.55(N)
226.5
DEP 126.125(N) 132.3(S)
363.8

1. JET ACFT USE VNAP A
2. PROPELLER DRIVEN AIRCRAFT DO NOT EXCEED 165 KTS IN CLIMB UNTIL IN CONTACT WITH DEP CONTROL AND PASSING 4000 ASL.
3. ALL AIRCRAFT DO NOT EXCEED 280 KTS UNTIL ABOVE 7000 ASL.



DEPARTURE ROUTE DESCRIPTION

Contact Departure Control after passing 1000 ASL unless instructed otherwise by ATC.

Runway 08L: Climb on Hdg **081°**. At 3.5 DME fly Hdg **070°** for vectors to assigned route or depicted fix. Maintain **7000** ASL or as assigned. Expect clearance to flight planned altitude/flight level 5 minutes after departure.

Runway 08R: Climb on Hdg **081°**. At 3.6 DME fly Hdg **085°** for vectors to assigned route or depicted fix. Maintain **7000** ASL or as assigned. Expect clearance to flight planned altitude/flight level 5 minutes after departure.

COMMUNICATION FAILURE

If no radio contact with Departure Control by published/assigned altitude maintain assigned altitude until 5 minutes after departure; then, proceed on course and climb to flight planned altitude.

NOTE: Refer to Noise Abatement Procedures for additional requirements.

MCKINLAY ONE DEP (KIN1.)

VANCOUVER BRITISH COLUMBIA

VANCOUVER INTL

EFF 20 JAN 05

CHANGE: New chart

NAD83