

POWOL TRANSITION (POWOL.KEINN 7):
 ... From POWOL INTXN via YZT R-082 to QUODY INTXN then via YVR R-312 to KEINN INTXN. Thence ...

TRENA TRANSITION (TRENA.KEINN 7):
 ... From TRENA INTXN via YVR R-312 to KEINN INTXN. Thence ...

ELIDI TRANSITION (ELIDI.KEINN 7):
 ... From ELIDI INTXN via TOU R-359 to KEINN INTXN. Thence ...

RWYS 08L, 08R

... From KEINN INTXN via YVR R-312 to FASBO INTXN. Cross AQUIN INTXN at 14,000 or below and at 230 kts or less. At FASBO INTXN turn RIGHT to intercept and track YPK R-260 WESTBOUND. Expect RADAR VECTORS to final approach course.

RWY 12

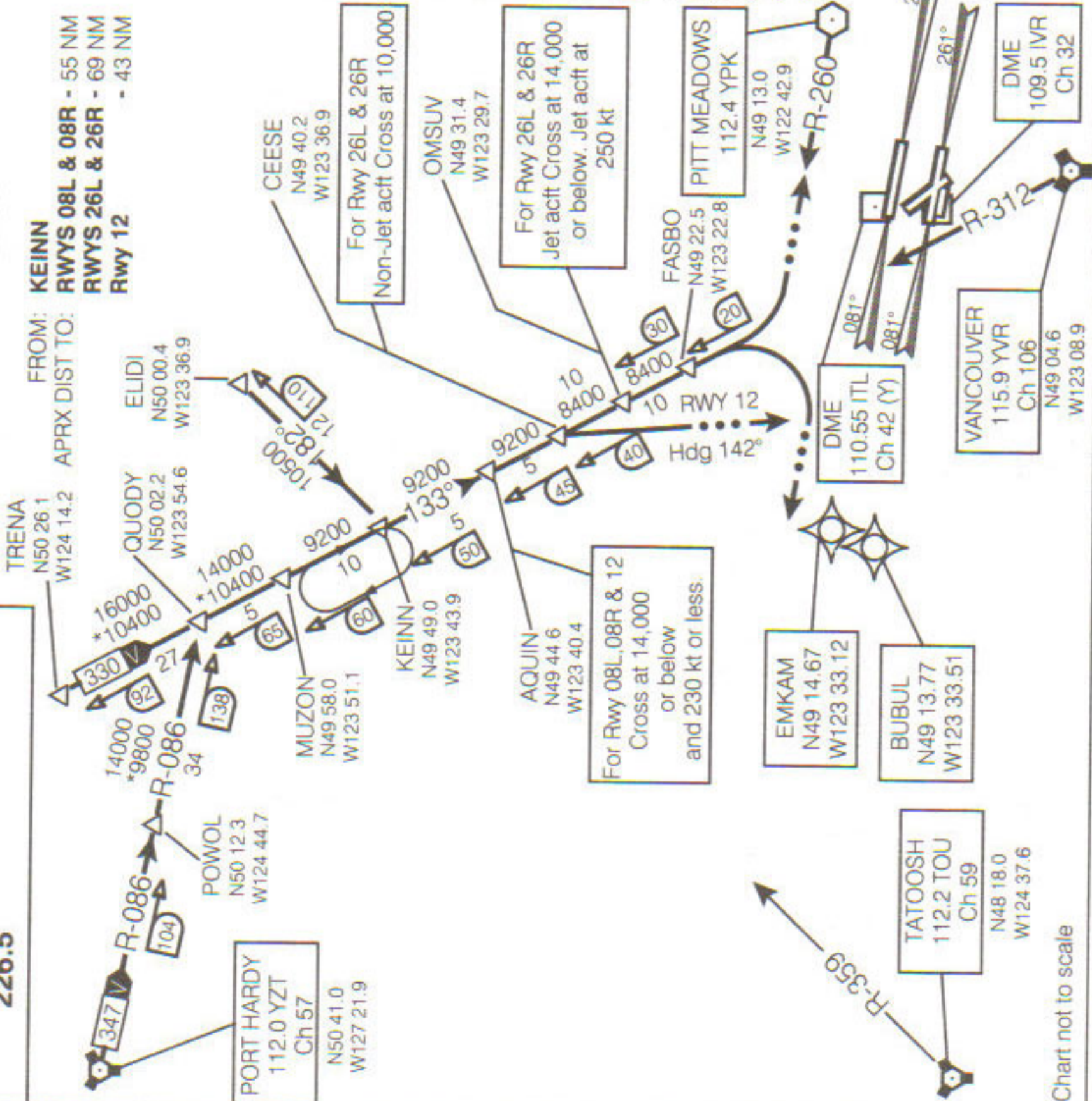
... From KEINN INTXN via YVR R-312 to CEESE INTXN. Cross AQUIN INTXN at 14,000 or below and at 230 kts or less. From CEESE INTXN fly HDG 142°. Expect RADAR VECTORS to final approach course.

RWYS 26L, 26R

... From KEINN INTXN via YVR R-312 to FASBO INTXN. Non-jet acft Cross CEESE INTXN at 10,000. Jet acft Cross OMSUV INTXN at 14,000 or below. Jet acft Cross OMSUV INTXN at 250 kt.. At FASBO INTXN turn LEFT to intercept and track YPK R-260 EASTBOUND. Expect RADAR VECTORS to final approach course.

MAINTAIN ASSIGNED ALTITUDE UNTIL CLEARED FOR APPROACH
 ... → **EXPECT RADAR VECTORS TO FINAL APPROACH**

FROM: KEINN
 RWYS 08L & 08R - 55 NM
 RWYS 26L & 26R - 69 NM
 Rwy 12 - 43 NM



ATIS 124.6
 ARR 128.17(Outer) 133.1(Inner) 352.7
 TWR 119.55(N) 118.7(S) 226.5