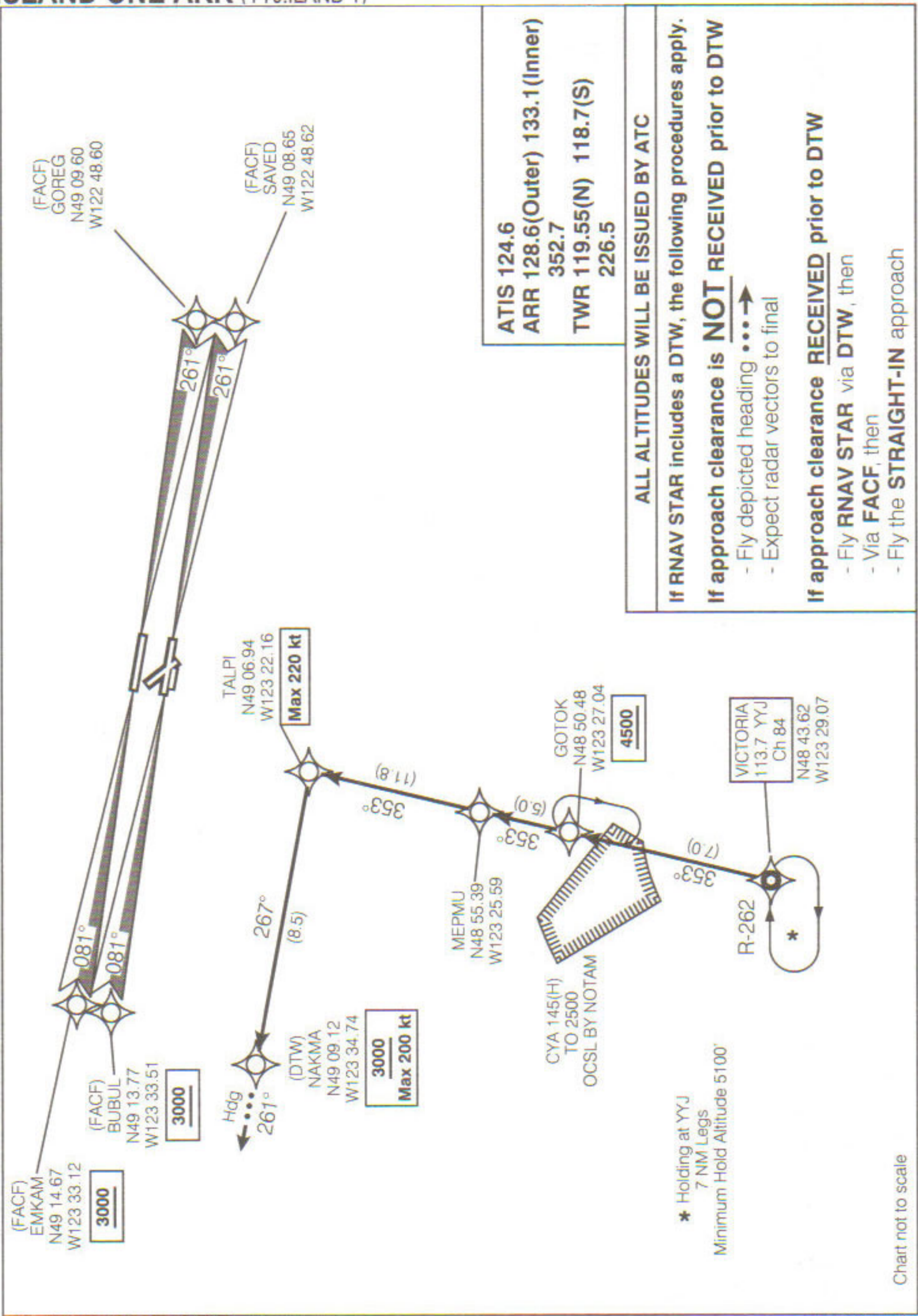


STAR (RNAV) RWYS 08L & 08R
ISLAND ONE ARR (YYJ.ILAND 1)



ALL ALTITUDES WILL BE ISSUED BY ATC

If RNAV STAR includes a DTW, the following procedures apply.

If approach clearance is NOT RECEIVED prior to DTW

- Fly depicted heading **•••→**
- Expect radar vectors to final

If approach clearance RECEIVED prior to DTW

- Fly RNAV STAR via DTW, then
- Via FACF, then
- Fly the STRAIGHT-IN approach

Source of Canadian Civil Aeronautical Data : © 2007 NAV CANADA All rights reserved

Chart not to scale

ISLAND ONE ARR (YYJ.ILAND 1)

VAR 18° E (2006)

VANCOUVER BC
VANCOUVER INTL