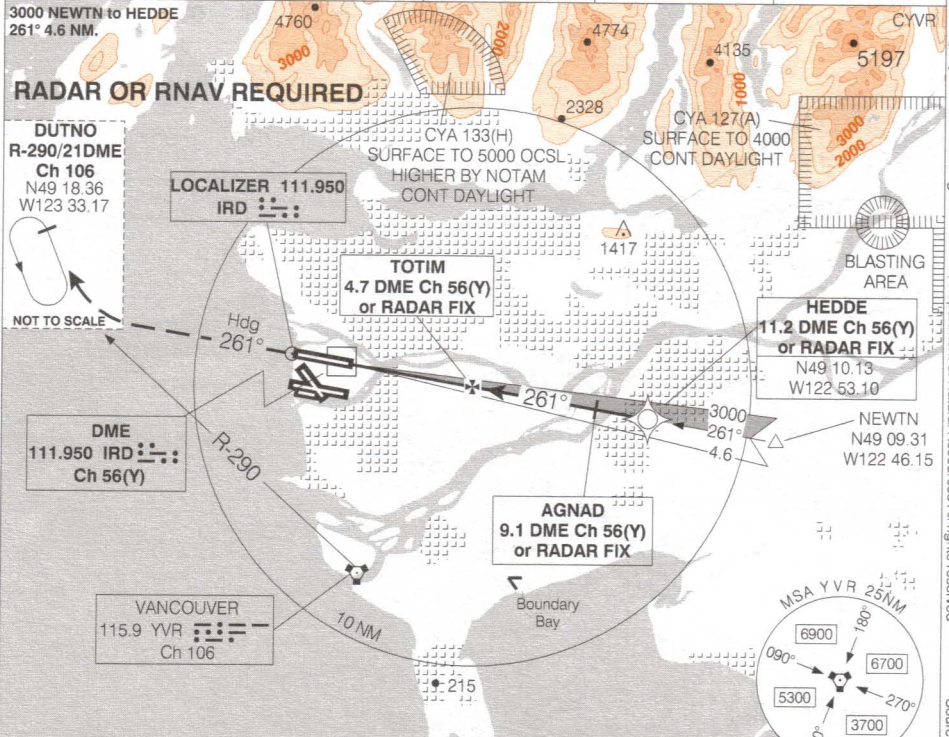


ILS/DME or ILS/RADAR RWY 26R

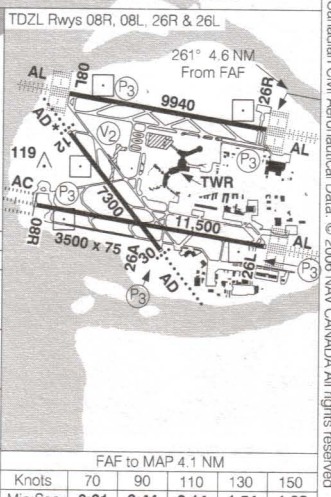
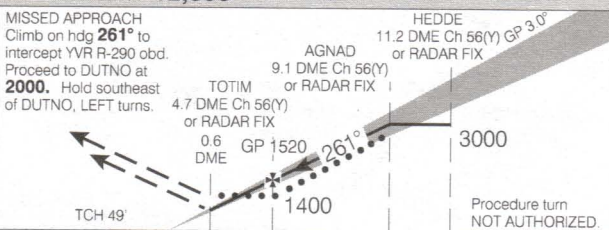
NOT FOR NAVIGATION

VANCOUVER INTL
VANCOUVER BC

ATIS 124.6	ARR 128.6(Outer) 133.1(Inner) 352.7	TWR 119.55(N) 226.5	GND 121.7(S) 127.15(N) 275.8	DEP 126.125(N) 132.3(S) 363.8	ELEV 14
3000 NEWTN to HEDDE 261° 4.6 NM.					TDZE 26R 9



SAFE ALT 100 NM **12,800**



CATEGORY	A	B	C	D
ILS/DME ILS/RADAR	209	(200)	½ RVR 26	
LOC/DME LOC/RADAR	480	(471)	1 ½	
CIRCLING	NOT AUTHORIZED			

FAF to MAP 4.1 NM					
Knots	70	90	110	130	150
Min:Sec	3:31	2:44	2:14	1:54	1:38

ILS/DME or ILS/RADAR RWY 26R

N49 11 38 W123 11 04 VAR 19° E

VANCOUVER BC
VANCOUVER INTL
NAD83

EFF 8 JUN 06 CHANGE: Comm box

© 2006 Her Majesty The Queen in Right of Canada, Department of Natural Resources All rights reserved. Source of Canadian Civil Aeronautical Data: © 2006 NAV CANADA All rights reserved.