

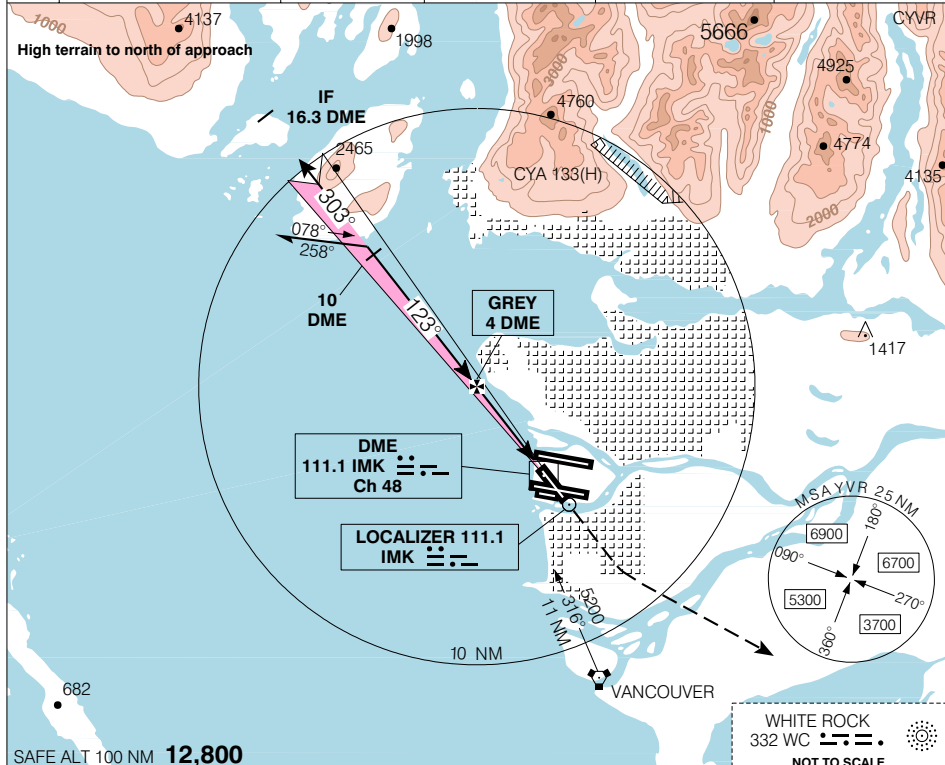


Geomatics Canada

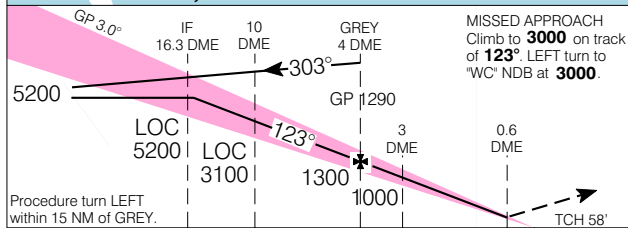
VANCOUVER INTL
VANCOUVER BRITISH COLUMBIA

ILS/DME RWY 12

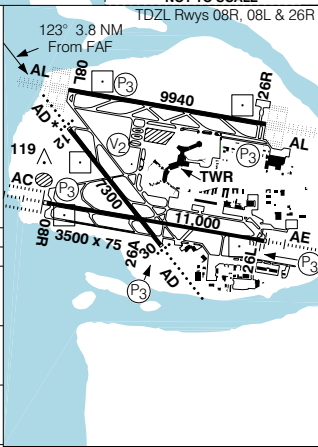
ATIS 124.6	ARR 128.6(Outer) 133.1(Inner) 352.7	TWR 124.0 118.7(S) 119.55(N) 226.5	GND 121.7(S) 127.15(N) 275.8	DEP 126.125(N) 132.3(S) 363.8	ELEV 14 TDZE 12 8
----------------------	--	---	---	--	------------------------------------



SAFE ALT 100 NM **12,800**



CATEGORY	A	B	C	D
ILS/DME	208	(200)	3/4	
LOC/DME	340	(332)	1	
CIRCLING	580 (566)	1 3/4	580 (566) 2	660 (646) 2



Knots	70	90	110	130	150
Min:Sec					

ILS/DME RWY 12

N49 11 42 W123 10 55 VAR 19° E

VANCOUVER BRITISH COLUMBIA
VANCOUVER INTL

EFF 10 JUN 04 CHANGE: Landing chart

NAD83