

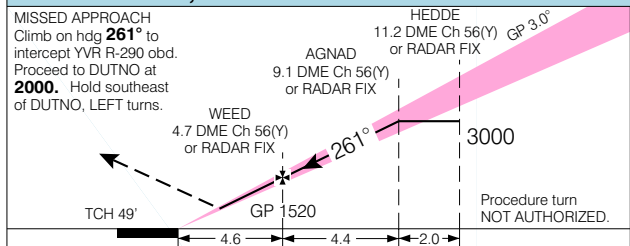
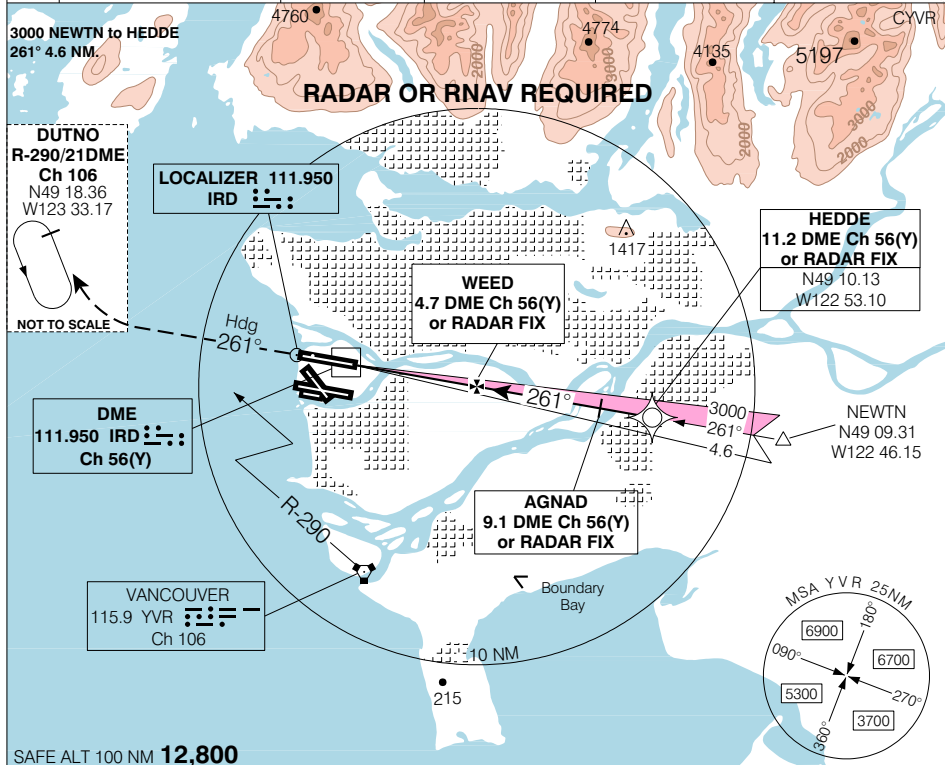


ILS CAT II or III RWY 26R

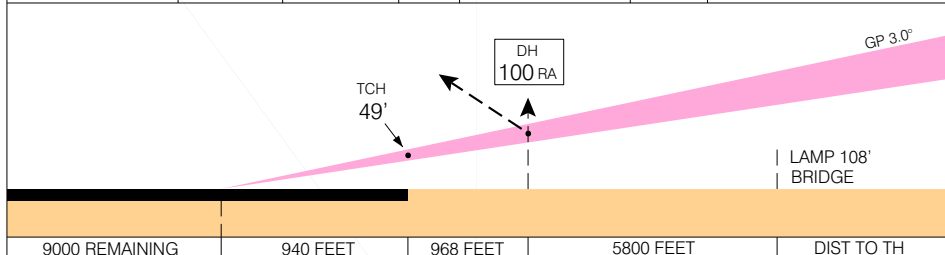
Geomatics Canada

VANCOUVER INTL
VANCOUVER BRITISH COLUMBIA

ATIS 124.6	ARR	TWR	GND	DEP	ELEV
	128.6(Outer) 133.1(Inner) 352.7	124.0 118.7(S) 119.55(N) 226.5	121.7(S) 127.15(N) 275.8	126.125(N) 132.3(S) 363.8	14
					TDZE 26R 9



PRIOR AUTH REQUIRED FROM TC			
CAT II	109	(100)	RVR 12
CAT III A			RVR 6
CAT III B			NOT AUTHORIZED
CAT III C			NOT AUTHORIZED



ILS CAT II or III RWY 26R

EFF 10 JUN 04

CHANGE: Revised

N49 11 42 W123 10 55
VAR 19° E

VANCOUVER BRITISH COLUMBIA
VANCOUVER INTL

NAD83