

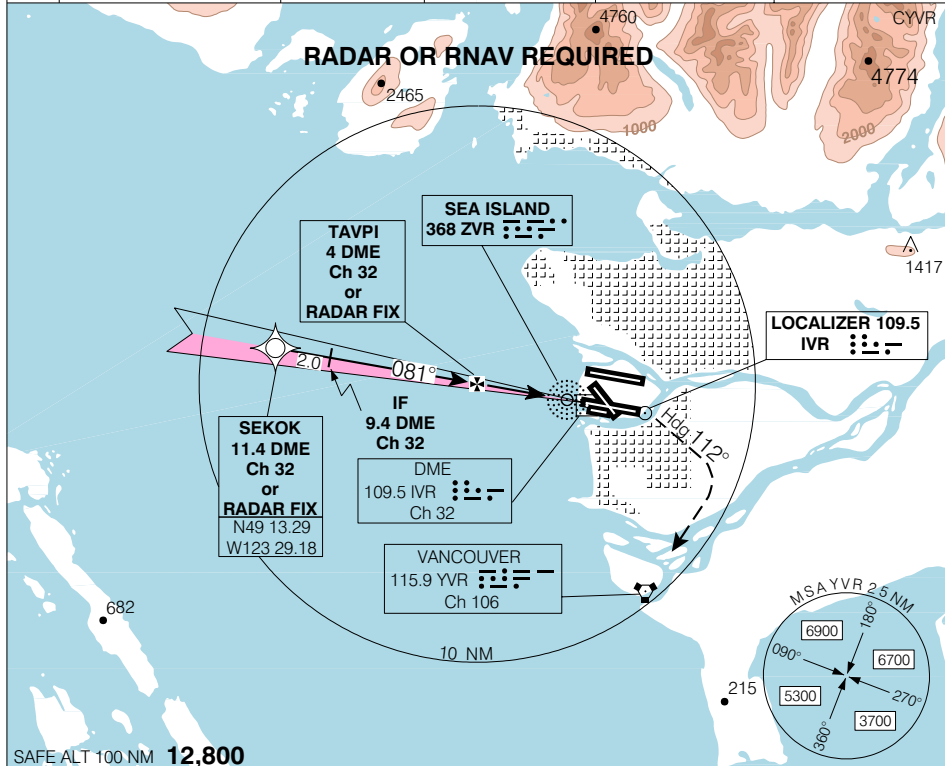


ILS CAT II RWY 08R

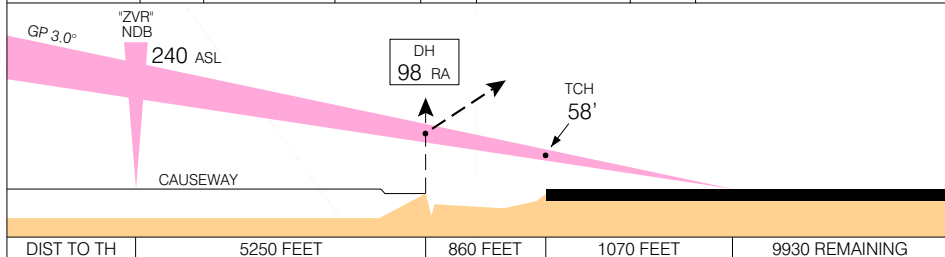
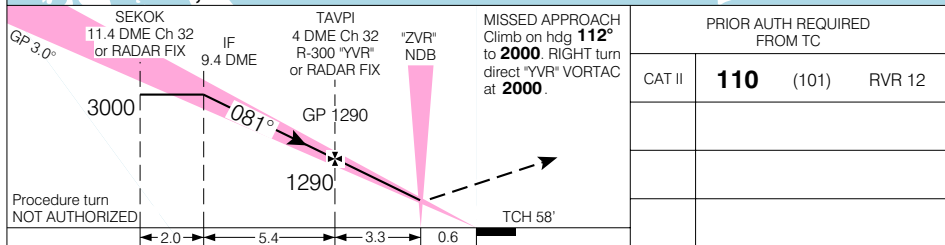
Geomatics Canada

VANCOUVER INTL
VANCOUVER BRITISH COLUMBIA

ATIS 124.6	ARR 128.6(Outer) 133.1(Inner) 352.7	TWR 124.0 118.7(S) 119.55(N) 226.5	GND 121.7(S) 127.15(N) 275.8	DEP 126.125(N) 132.3(S) 363.8	ELEV 14 TDZE 08R 9
----------------------	--	---	---	--	-------------------------------------



SAFE ALT 100 NM **12,800**



DIST TO TH	5250 FEET	860 FEET	1070 FEET	9930 REMAINING
------------	-----------	----------	-----------	----------------

ILS CAT II RWY 08R

N49 11 42 W123 10 55 VAR 19° E

VANCOUVER BRITISH COLUMBIA
VANCOUVER INTL
NAD83

EFF 19 FEB 04

CHANGE: 2003 Mag Var