



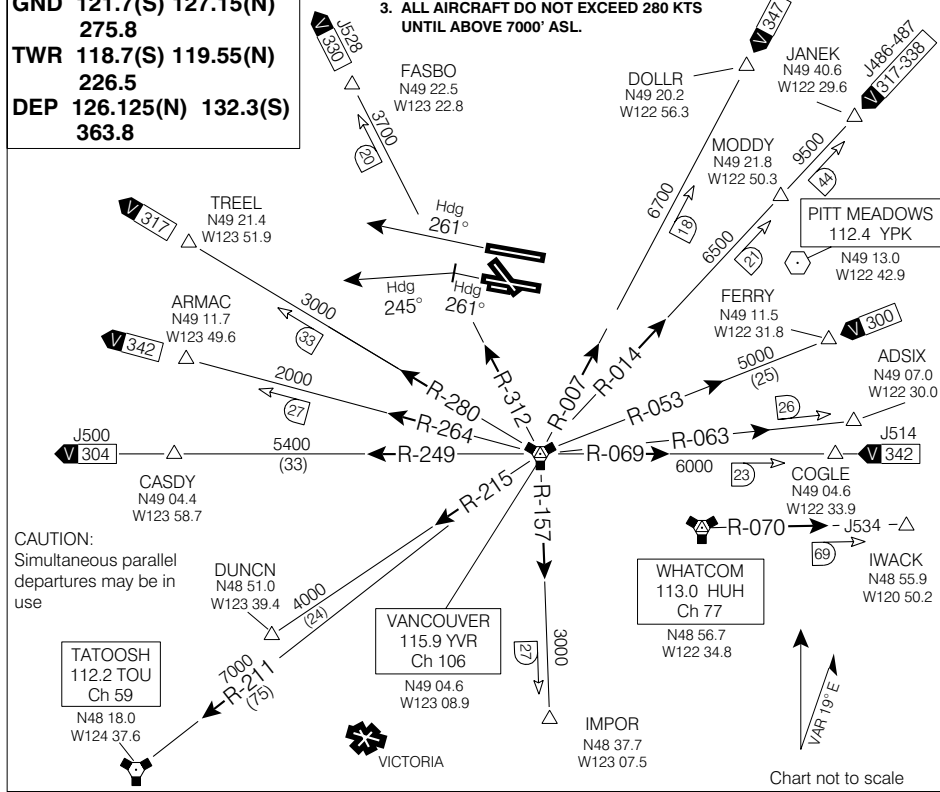
SID (VECTOR)

GEORGIA ONE DEP (GORG1.)

VANCOUVER INTL

VOT 114.8
ATIS 124.6
CLNC DEL 121.4
GND 121.7(S) 127.15(N)
275.8
TWR 118.7(S) 119.55(N)
226.5
DEP 126.125(N) 132.3(S)
363.8

1. JET ACFT USE VNAV A
2. PROPELLER DRIVEN AIRCRAFT DO NOT EXCEED 165 KTS IN CLIMB UNTIL IN CONTACT WITH DEP CONTROL AND PASSING 4000' ASL.
3. ALL AIRCRAFT DO NOT EXCEED 280 KTS UNTIL ABOVE 7000' ASL.



CAUTION:
 Simultaneous parallel departures may be in use

Chart not to scale

DEPARTURE ROUTE DESCRIPTION

- Runway 26L:** Climb Hdg 261°. At 4200' ASL turn LEFT to Hdg 245° or as assigned by ATC. Contact Departure Control after passing 1000' ASL unless instructed otherwise by ATC. Maintain 7000' ASL or as assigned. Expect radar vectors to filed/assigned route or depicted Fix, and clearance to flight planned altitude/flight level 5 minutes after departure.
- Runway 26R:** Climb Hdg 261°. Contact Departure Control after passing 1000' ASL unless instructed otherwise by ATC. Maintain 7000' ASL or as assigned. Expect radar vectors to filed/assigned route or depicted Fix, and clearance to flight planned altitude/flight level 5 minutes after departure.

COMMUNICATION FAILURE

If no radio contact with Departure Control by published/assigned altitude maintain assigned altitude until 5 minutes after departure; then, proceed on course and climb to flight planned altitude.

NOTE: Refer to Noise Abatement Procedures for additional requirements.

GEORGIA ONE DEP (GORG1.)

VANCOUVER BRITISH COLUMBIA
 VANCOUVER INTL

EFF 12 MAY 05 CHANGE: New chart

NAD83